

Huntington at Mountain House  
**CHANTEL**



**Elevation B**

**Available elevations:**



**Elevation B**



**Elevation C**



**Elevation D**

**Approx. square feet:** 3,050-3,350

**Stories:** 2

**Bedrooms:** 3 - 6

**Garage:** 2- to 3-car

**Plan Number:** N662

Two garages flank the Chantel plan's attractive covered porch. The entry area just inside leads to a study, the stairs and the main floor's generous entertaining spaces: an open kitchen, nook and great room. Upstairs you'll find inviting bedrooms with walk-in closets, a convenient laundry and a large loft. Options include a dining room or bedroom in place of the study, a bedroom or a study with porch instead of the second garage, an additional bedroom and bath in lieu of the loft, and a gourmet kitchen.

**COMMUNITY LOCATION**

437 West Morgan Court  
Mountain House, CA 95391  
209-650-7022

**HOME GALLERY**

One Harbor Center, Suite 150  
Suisun City, CA 94585  
707-389-7016



**COMMUNITY LOCATION**

437 West Morgan Court  
Mountain House, CA 95391  
209-650-7022

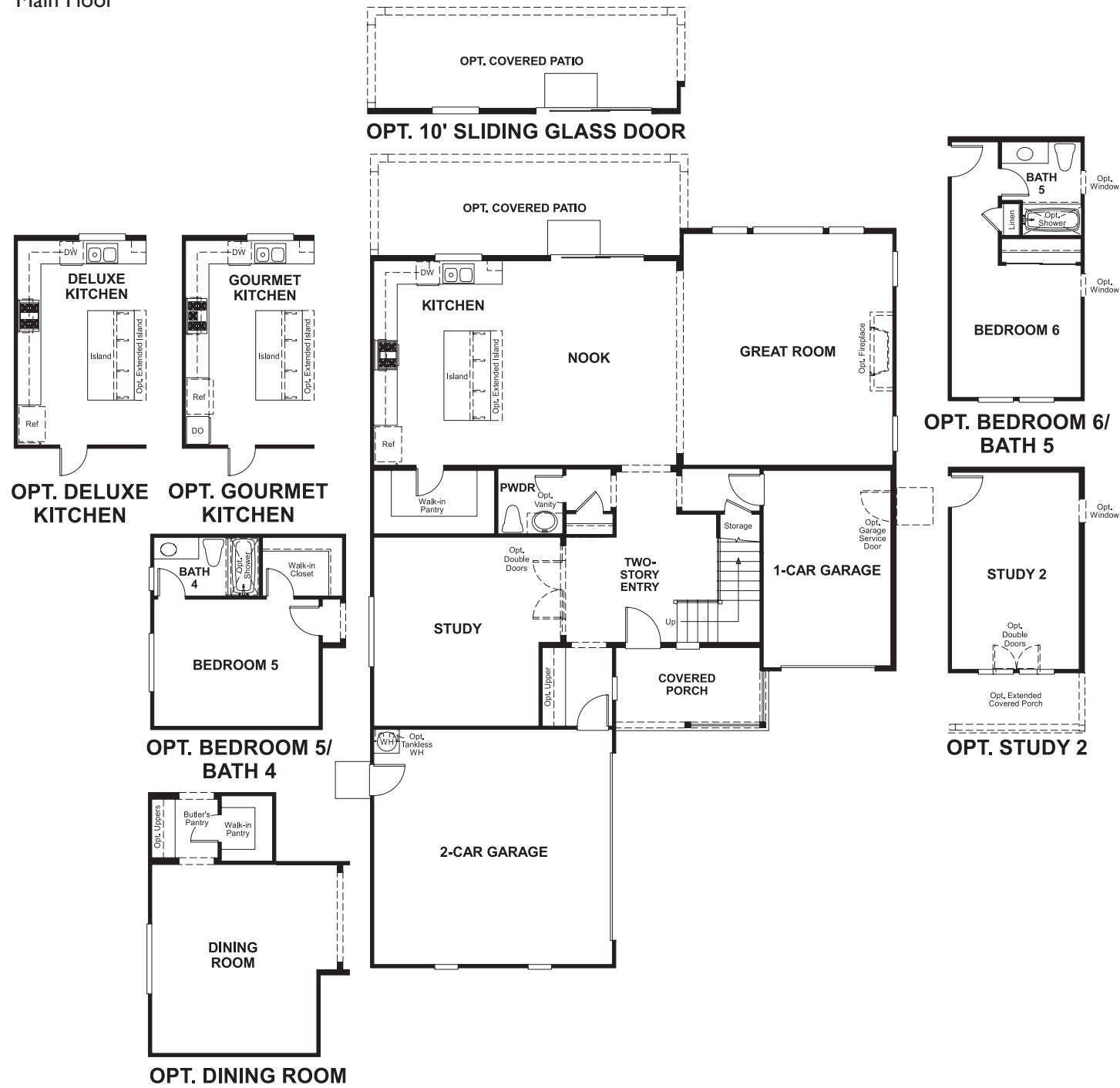
**HOME GALLERY**

One Harbor Center, Suite 150  
Suisun City, CA 94585  
707-389-7016

Huntington at Mountain House  
**CHANTEL**

**Approx. square feet:** 3,050-3,350 **Garage:** 2- to 3-car  
**Stories:** 2 **Plan Number:** N662  
**Bedrooms:** 3 - 6

**Floor Plan**  
Main Floor



**Floor Plan**  
Second Floor



**THIS PLAN'S PROJECTED HERS® INDEX = 64\***  
Projected Rating Based on Plans – Field Confirmation Required

**How does this floor plan rate?**  
Take a look: **100** = Standard new home\* **130** = Typical resale home\*\*  
The lower the number, the better! Refer to the RESNET® HERS index brochure or go to [www.RESNET.us](http://www.RESNET.us) for details.

**What's a HERS® Index?** HERS stands for Home Energy Rating System, a system created by RESNET® to measure home energy efficiency.<sup>^</sup>  
A Projected HERS index or rating is a computer simulation performed prior to construction by a third-party HERS rater using RESNET-accredited rating software, rated feature and specification data derived from home plans, features and specifications, and other data selected or assumed by the rater. The projected HERS index is approximate and is subject to change without notice. Actual results will vary.

\*This information is presented for education purposes only. The HERS index for a confirmed rating will be determined by a third-party HERS rater based on data gathered from on-site observations and, if required, testing of rated features for a home as featured, optioned, located, oriented and/or built.  
+Standard new home is based on the RESNET® Reference Home definition with a HERS® index of 100 (based on the 2006 International Energy Conservation Code).  
++Typical resale home is based on the U.S. Department of Energy definition with a HERS® index of 130.

<sup>^</sup>RESNET® has developed the HERS® index to indicate the comparative efficiencies of homes. It is no guarantee that energy efficiencies will be achieved.